

Aug 13, 2012 - 10:18pm - C:\Users\lpo\Documents\1102 - Concord-Carlisle\DWG\1102-01.dwg

Architect:

omr architects inc

543 Massachusetts Ave, West Acton, MA 01720
www.omr-architects.com t: 978.264.0160

Consulting Engineer:

Brown | Sardina

Brown Sardina, Inc.
Planning, Landscape Architecture
129 South Street Boston, MA 02111
Tel: 617.482.4703 Facsimile: 617.482.4882
www.brownsardina.com

Registration:

**Design
Development
Submission**

Project Name and Address:

Concord-Carlisle Regional High School

500 Walden Street
Concord, MA 01742

Issue Submissions:

No.	Date	Description
1	8/15/2012	Design Development Submission

Title:

**Sheet Layout and
Site Context Plan**

Date: August 15, 2012

Scale: 1" = 100'-0"

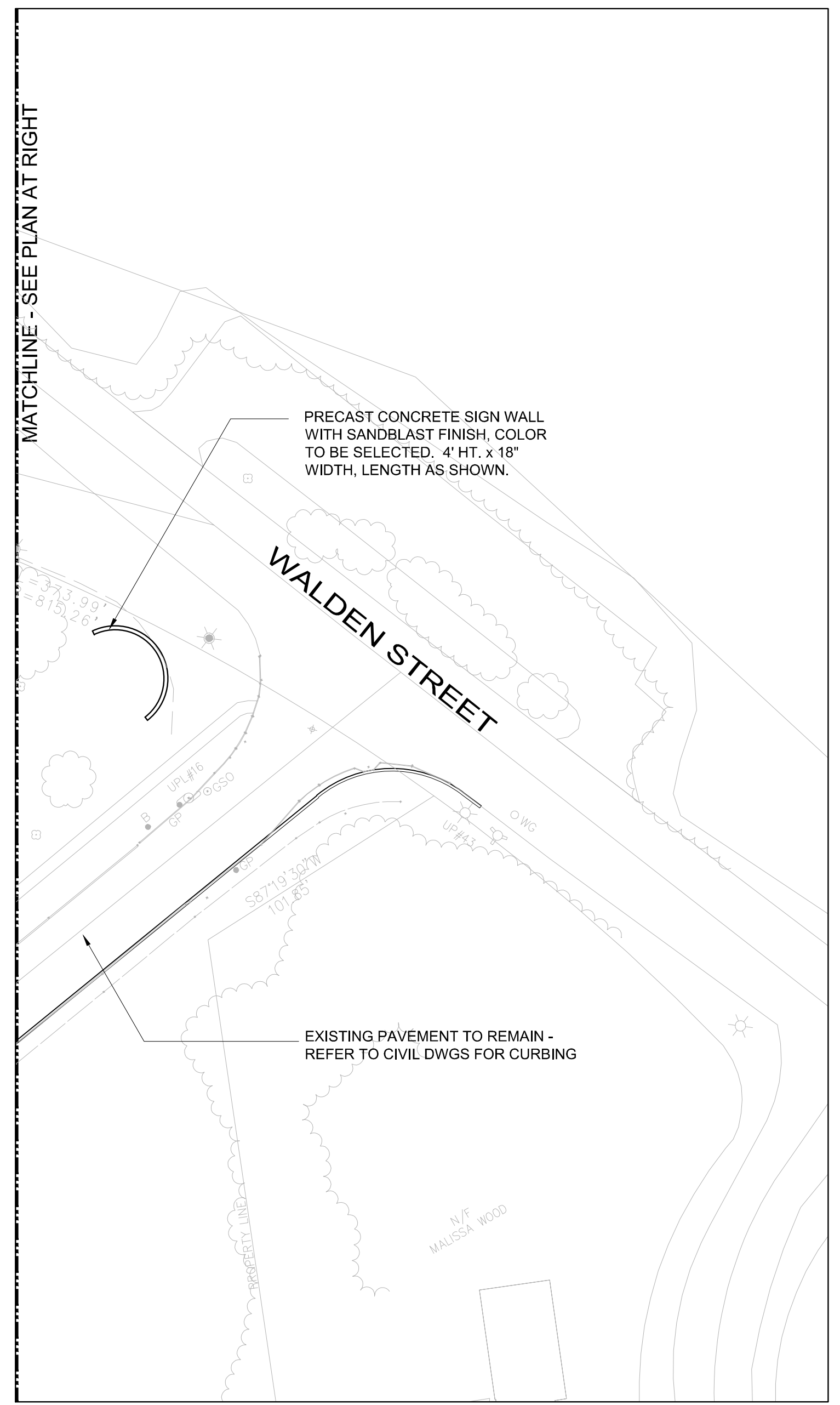
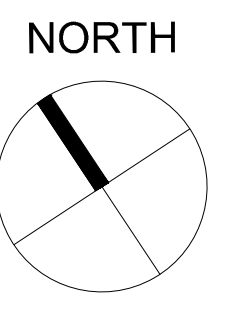
Drawn: LPO/BB

Checked: WFB

Project No.: 1102.00

Drawing No.: **L1.0A**

© omr architects inc



PRECAST CONCRETE SIGN WALLS WITH SANDBLAST FINISH, COLOR TO BE SELECTED. 4' HT. x 18" WIDTH, LENGTH AS SHOWN.

PRECAST CONCRETE SIGN WALL WITH SANDBLAST FINISH, COLOR TO BE SELECTED. 4' HT. x 18" WIDTH, LENGTH AS SHOWN.

EXISTING CURBING TO REMAIN

EXISTING PAVEMENT TO REMAIN - REFER TO CIVIL DWGS FOR CURBING

EXISTING PAVEMENT TO REMAIN

EXISTING PAVEMENT TO REMAIN

EXISTING CURB AND SIDEWALK TO REMAIN

EXISTING CURBING TO REMAIN

HANDICAP CURB CUT RAMP

- LEGEND**
- ROADWAY LIGHT FIXTURE
 - WALKWAY LIGHT FIXTURE
 - R RADIUS
 - EJ EXPANSION JOINT
 - EQ EQUAL
 - PL PLANTING AREA
 - SIM SIMILAR
 - VIF VERIFY IN THE FIELD

- MATERIALS NOTES**
1. REFER TO SPECIFICATIONS FOR FURTHER INFORMATION ON AND DEFINITIONS OF MATERIALS AND SITE IMPROVEMENTS SHOWN ON THIS PLAN.
 2. REFER TO CIVIL DWGS. FOR ALL VEHICULAR PAVEMENTS, CURBING, STRIPING AND SIGNAGE.
 3. REFER TO ELECTRICAL DWGS. FOR FURTHER INFORMATION ON SITE LIGHTING.

- PEDESTRIAN BITUMINOUS CONCRETE PAVEMENT
- HANDICAP CURB CUT RAMP
- RELOCATE EXISTING DISCUS CAGE
- VEHICULAR GUARD RAIL - REFER TO CIVIL DWGS.
- PEDESTRIAN BITUMINOUS CONCRETE PAVEMENT
- MHD TYPE 3 - CAPE COD BERM BITUMINOUS CONCRETE CURBING (4" REVEAL) (SEE CIVIL DRAWINGS)
- VEHICULAR BITUMINOUS CONCRETE PAVEMENT - (SEE CIVIL DRAWINGS)

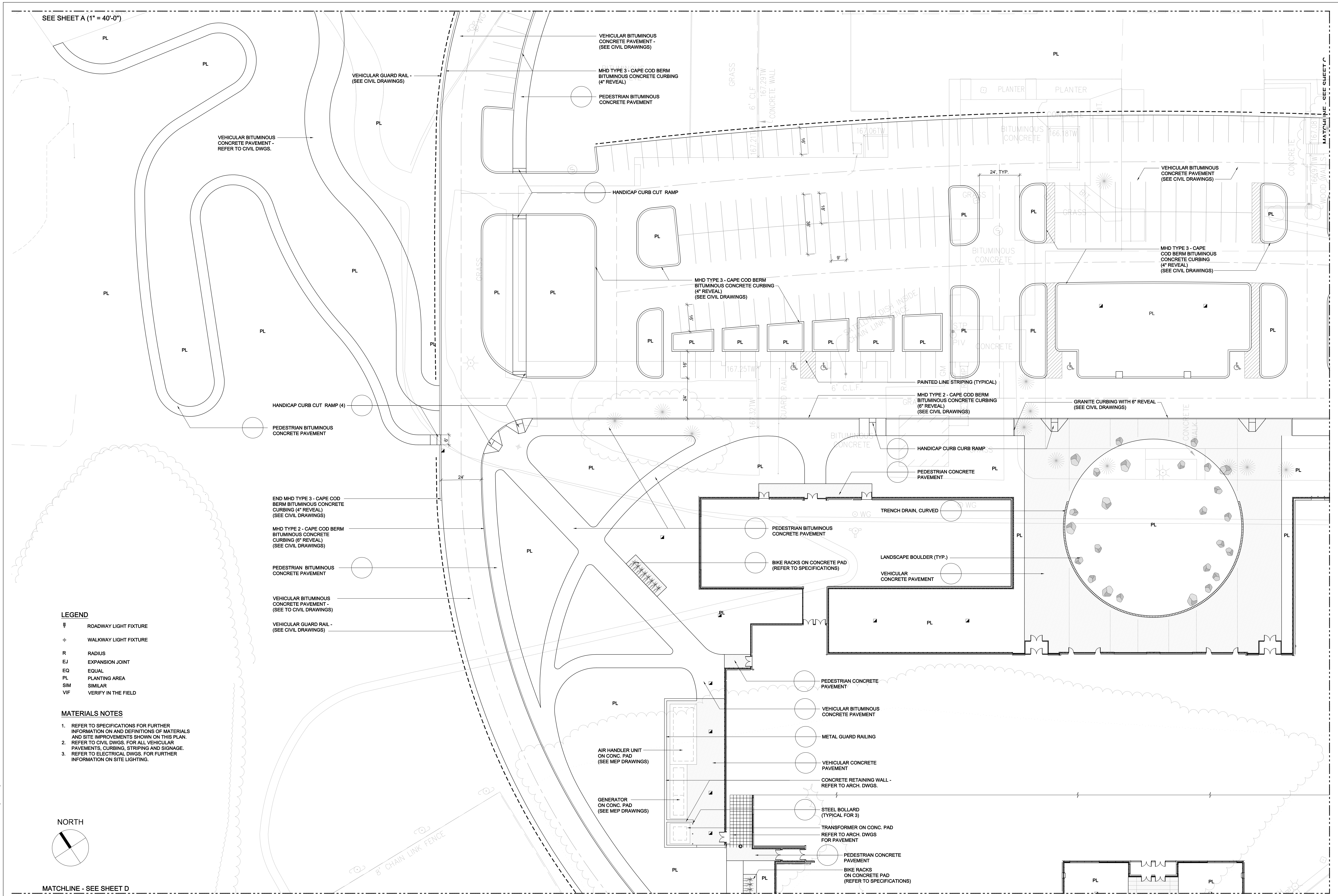
- PEDESTRIAN BITUMINOUS CONCRETE PAVEMENT
- MHD TYPE 3 - CAPE COD BERM BITUMINOUS CONCRETE CURBING (4" REVEAL) (SEE CIVIL DRAWINGS)
- VEHICULAR BITUMINOUS CONCRETE PAVEMENT (SEE CIVIL DRAWINGS)
- PEDESTRIAN BITUMINOUS CONCRETE PAVEMENT

SEE SHEET B (1" = 20'-0")

SEE SHEET C (1" = 20'-0")

Architect: omr architects inc 543 Massachusetts Ave, West Acton, MA 01720 www.omr-architects.com t: 978.264.0160	Consulting Engineer: Brown Sardina Brown Sardina, Inc. Planning, Landscape Architecture 129 South Street Boston, MA 02111 Tel: 617.482.4703 Facsimile: 617.482.4882 www.brownsardina.com	Registration: Design Development Submission	Project Name and Address: Concord-Carlisle Regional High School 500 Walden Street Concord, MA 01742	Issue Submissions: No.: Date: Description: 8/15/2012 Design Development Submission	Title: Materials Plan	Project No.: 1102.00
				Date: August 15, 2012	Scale: 1" = 40'-0"	Drawn: LPO/BB

Aug 13, 2012 - 12:24pm - C:\active\revise - The Office of Michael Rosefield\1105 - concord carlisle\high\l1.1.dwg

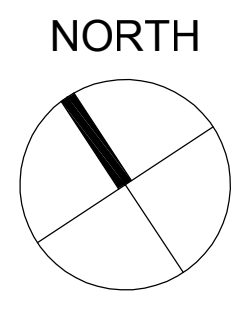


SEE SHEET A (1" = 40'-0")

MATCHLINE - SEE SHEET C

- LEGEND**
- ⌘ ROADWAY LIGHT FIXTURE
 - ⊕ WALKWAY LIGHT FIXTURE
 - R RADIUS
 - EJ EXPANSION JOINT
 - EQ EQUAL
 - PL PLANTING AREA
 - SIM SIMILAR
 - VIF VERIFY IN THE FIELD

- MATERIALS NOTES**
1. REFER TO SPECIFICATIONS FOR FURTHER INFORMATION ON AND DEFINITIONS OF MATERIALS AND SITE IMPROVEMENTS SHOWN ON THIS PLAN.
 2. REFER TO CIVIL DWGS. FOR ALL VEHICULAR PAVEMENTS, CURBING, STRIPING AND SIGNAGE.
 3. REFER TO ELECTRICAL DWGS. FOR FURTHER INFORMATION ON SITE LIGHTING.

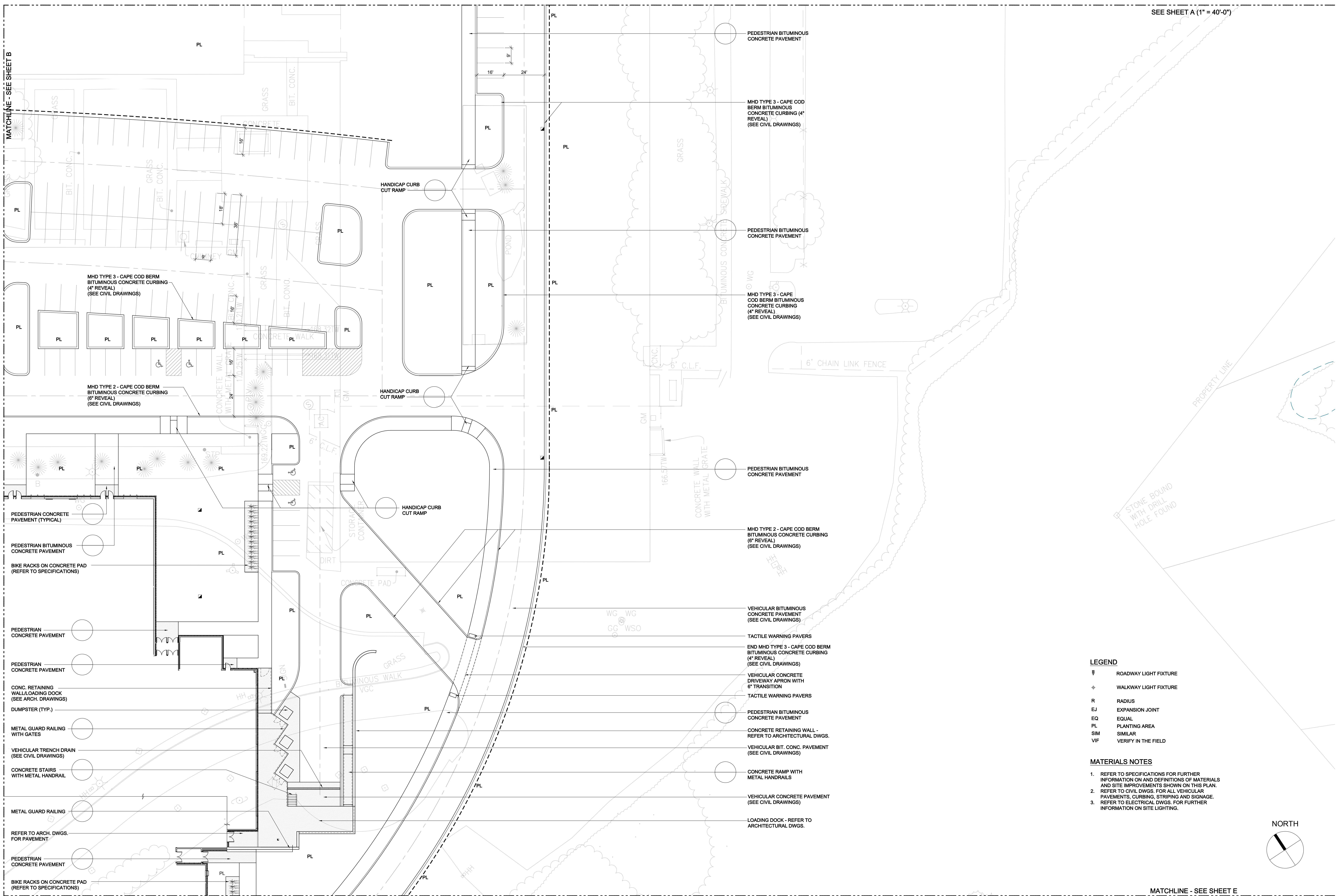


MATCHLINE - SEE SHEET D

Architect: omr architects inc <small>543 Massachusetts Ave, West Acton, MA 01720 www.omr-architects.com t: 978.264.0160</small>	Consulting Engineer: Brown Sardina <small>Brown Sardina, Inc. Planning, Landscape Architecture 129 South Street Boston, MA 02111 Tel: 617.482.4703 Facsimile: 617.482.4882 www.brownsardina.com</small>	Registration: Design Development Submission	Project Name and Address: <h2 style="text-align: center;">Concord-Carlisle Regional High School</h2> <p style="text-align: center;">500 Walden Street Concord, MA 01742</p>	Issue Submissions: <table border="1" style="width: 100%; border-collapse: collapse;"> <thead> <tr> <th>No.</th> <th>Date</th> <th>Description</th> </tr> </thead> <tbody> <tr> <td> </td> <td>8/15/2012</td> <td>Design Development Submission</td> </tr> <tr> <td> </td> <td> </td> <td> </td> </tr> <tr> <td> </td> <td> </td> <td> </td> </tr> </tbody> </table>	No.	Date	Description		8/15/2012	Design Development Submission							Title: <h2 style="text-align: center;">Materials Plan</h2>	Project No.: 1102.00 Drawing No.: <h1 style="text-align: center;">L1.1B</h1>
No.	Date	Description																
	8/15/2012	Design Development Submission																
Date: August 15, 2012		Scale: 1" = 20'-0"		Drawn: LPO/BB		Checked: WFB												

Aug 13, 2012 - 11:08am - C:\active\mason - The Office of Michael Rosewell\1005 - concord carlisle\high-1.1.dwg

MATCHLINE - SEE SHEET B

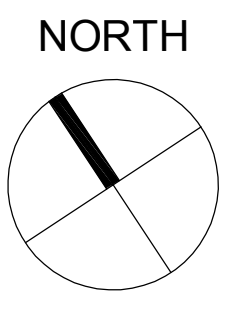


LEGEND

- ⌚ ROADWAY LIGHT FIXTURE
- ⊕ WALKWAY LIGHT FIXTURE
- R RADIUS
- EJ EXPANSION JOINT
- EQ EQUAL
- PL PLANTING AREA
- SIM SIMILAR
- VIF VERIFY IN THE FIELD

MATERIALS NOTES

1. REFER TO SPECIFICATIONS FOR FURTHER INFORMATION ON AND DEFINITIONS OF MATERIALS AND SITE IMPROVEMENTS SHOWN ON THIS PLAN.
2. REFER TO CIVIL DWGS. FOR ALL VEHICULAR PAVEMENTS, CURBING, STRIPING AND SIGNAGE.
3. REFER TO ELECTRICAL DWGS. FOR FURTHER INFORMATION ON SITE LIGHTING.

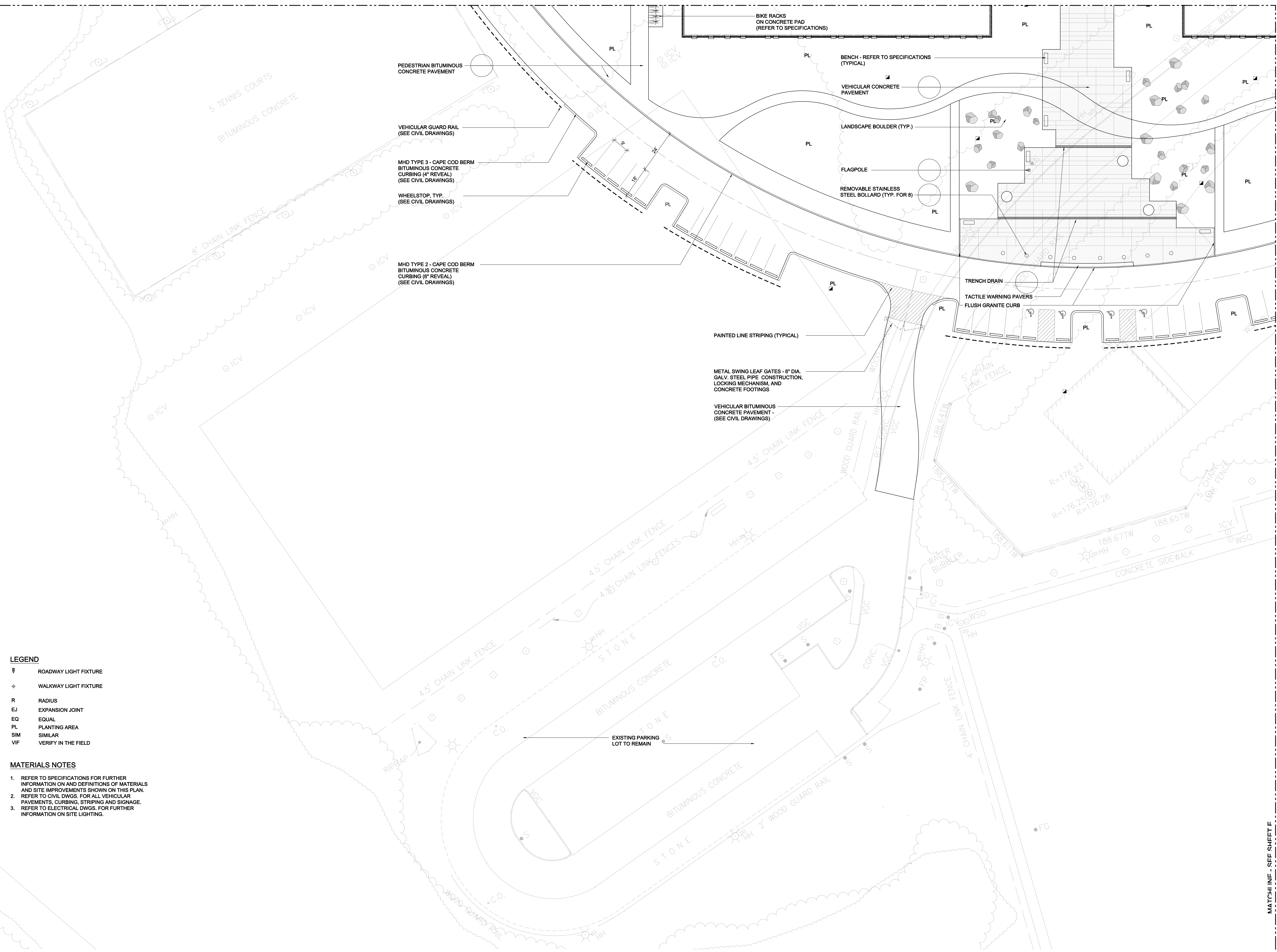


MATCHLINE - SEE SHEET E

Aug 13, 2012 - 11:50am - C:\active\mason - The Office of Michael Rosewell\1005 - concord-carlisle\high-1.1.dwg

Architect: omr architects inc 543 Massachusetts Ave, West Acton, MA 01720 www.omr-architects.com t: 978.264.0160	Consulting Engineer: Brown Sardina Brown Sardina, Inc. Planning, Landscape Architecture 129 South Street Boston, MA 02111 Tel: 617.482.4703 Facsimile: 617.482.4882 www.brownsardina.com	Registration: Design Development Submission	Project Name and Address: Concord-Carlisle Regional High School 500 Walden Street Concord, MA 01742	Issue Submissions: <table border="1" style="width: 100%; border-collapse: collapse;"> <thead> <tr> <th>No.</th> <th>Date</th> <th>Description</th> </tr> </thead> <tbody> <tr> <td>1</td> <td>8/15/2012</td> <td>Design Development Submission</td> </tr> <tr> <td> </td> <td> </td> <td> </td> </tr> <tr> <td> </td> <td> </td> <td> </td> </tr> <tr> <td> </td> <td> </td> <td> </td> </tr> </tbody> </table>	No.	Date	Description	1	8/15/2012	Design Development Submission										Title: Materials Plan Date: August 15, 2012 Scale: 1" = 20'-0" Drawn: LPO/BB Checked: WFB	Project No.: 1102.00 Drawing No.: L1.1C © omr architects inc
No.	Date	Description																			
1	8/15/2012	Design Development Submission																			

MATCHLINE - SEE SHEET B



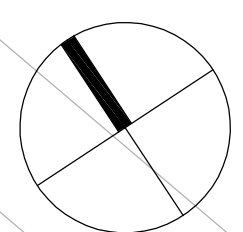
LEGEND

- ⌚ ROADWAY LIGHT FIXTURE
- ⊕ WALKWAY LIGHT FIXTURE
- R RADIUS
- EJ EXPANSION JOINT
- EQ EQUAL
- PL PLANTING AREA
- SIM SIMILAR
- VIF VERIFY IN THE FIELD

MATERIALS NOTES

1. REFER TO SPECIFICATIONS FOR FURTHER INFORMATION ON AND DEFINITIONS OF MATERIALS AND SITE IMPROVEMENTS SHOWN ON THIS PLAN.
2. REFER TO CIVIL DWGS. FOR ALL VEHICULAR PAVEMENTS, CURBING, STRIPING AND SIGNAGE.
3. REFER TO ELECTRICAL DWGS. FOR FURTHER INFORMATION ON SITE LIGHTING.

NORTH



Aug 13, 2012 - 11:51am - C:\active\mason - The Office of Michael Rowland\1005 - concord carlisle\high-1.1.dwg

MATCHLINE - SEE SHEET F

Architect:

omr architects inc

543 Massachusetts Ave, West Acton, MA 01720
www.omr-architects.com t: 978.264.0160

Consulting Engineer:

Brown | Sardina

Brown Sardina, Inc.
Planning, Landscape Architecture
129 South Street Boston, MA 02111
Tel: 617.482.4703 Facsimile: 617.482.4882
www.brownsardina.com

Registration:

**Design
Development
Submission**

Project Name and Address:

Concord-Carlisle Regional High School

500 Walden Street
Concord, MA 01742

Issue Submissions:

No.	Date	Description
1	8/15/2012	Design Development Submission

Title:

Materials Plan

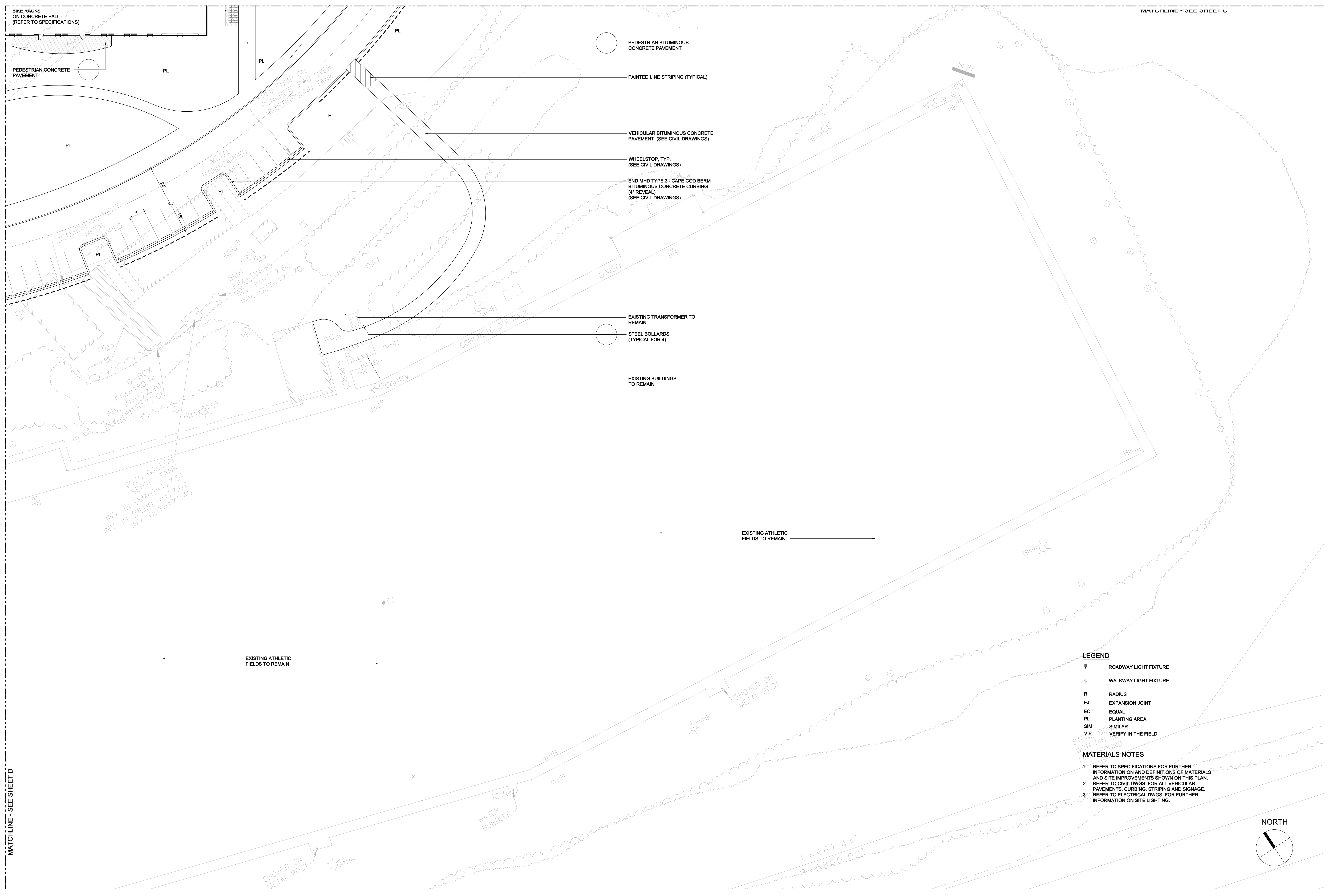
Date: August 15, 2012 Scale: 1" = 20'-0"

Drawn: LPO/BB Checked: WFB

Project No.: 1102.00

Drawing No.: **L1.1D**

© omr architects inc

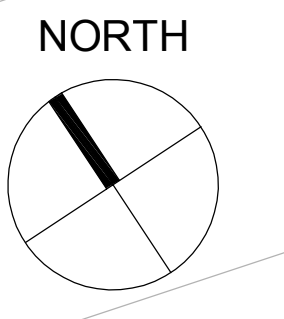


- PEDESTRIAN BITUMINOUS CONCRETE PAVEMENT
- PAINTED LINE STRIPING (TYPICAL)
- VEHICULAR BITUMINOUS CONCRETE PAVEMENT (SEE CIVIL DRAWINGS)
- WHEELSTOP, TYP. (SEE CIVIL DRAWINGS)
- END MHD TYPE 3 - CAPE COD BERM BITUMINOUS CONCRETE CURBING (4\"/>

- EXISTING TRANSFORMER TO REMAIN
- STEEL BOLLARDS (TYPICAL FOR 4)
- EXISTING BUILDINGS TO REMAIN

- LEGEND**
- ⌚ ROADWAY LIGHT FIXTURE
 - ⚡ WALKWAY LIGHT FIXTURE
 - R RADIUS
 - EJ EXPANSION JOINT
 - EQ EQUAL
 - PL PLANTING AREA
 - SIM SIMILAR
 - VIF VERIFY IN THE FIELD

- MATERIALS NOTES**
1. REFER TO SPECIFICATIONS FOR FURTHER INFORMATION ON AND DEFINITIONS OF MATERIALS AND SITE IMPROVEMENTS SHOWN ON THIS PLAN.
 2. REFER TO CIVIL DWGS. FOR ALL VEHICULAR PAVEMENTS, CURBING, STRIPING AND SIGNAGE.
 3. REFER TO ELECTRICAL DWGS. FOR FURTHER INFORMATION ON SITE LIGHTING.



Architect:
omr architects inc
 543 Massachusetts Ave, West Acton, MA 01720
 www.omr-architects.com t: 978.264.0160

Consulting Engineer:
Brown | Sardina
 Brown Sardina, Inc.
 Planning, Landscape Architecture
 129 South Street Boston, MA 02111
 Tel: 617.482.4703 Facsimile: 617.482.4882
 www.brownsardina.com

Registration:
Design Development Submission

Project Name and Address:
Concord-Carlisle Regional High School
 500 Walden Street
 Concord, MA 01742

Issue Submissions:	
No.	Date: Description:
1	8/15/2012 Design Development Submission

Title:
Materials Plan

Date: August 15, 2012 Scale: 1" = 20'-0"

Drawn: LPO/BB Checked: WFB

Project No.: 1102.00
 Drawing No.: **L1.1E**
 © omr architects inc

Aug 13, 2012 - 11:52am - C:\active\kirkson - The Office of Michael Rosenfeld\1005 - concord carlisle\high\1.1.dwg